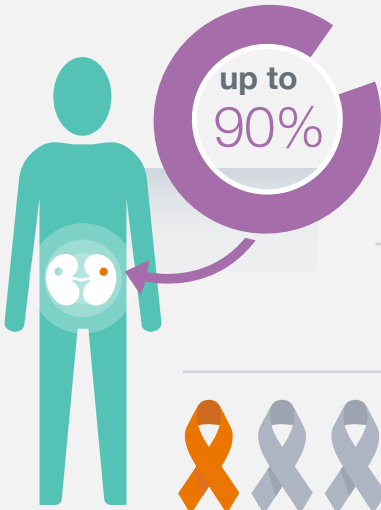




Renal Cell Carcinoma (RCC)



RCC is the most common type of kidney cancer, accounting for up to **90%** of cancerous kidney tumors.

APPROXIMATELY
5% / 3%
of all new cancer cases worldwide are caused by **RCC**.



AN ESTIMATED 363,000 people worldwide were diagnosed with **RCC** in 2018.



~1/3

of patients with RCC have metastatic, or advanced, cancer at the time of diagnosis, meaning the cancer cells have spread to other parts of the body.

Possible Signs & Symptoms of RCC

THESE ARE NOT ALL THE POSSIBLE SIGNS AND SYMPTOMS OF RCC.



A lump on the side or lower back



Low back pain on one side



Weight loss for no known reason



Hematuria (blood in the urine)



Anemia (low red blood cell counts)



Loss of appetite



Fatigue



Fever

Management of Advanced RCC

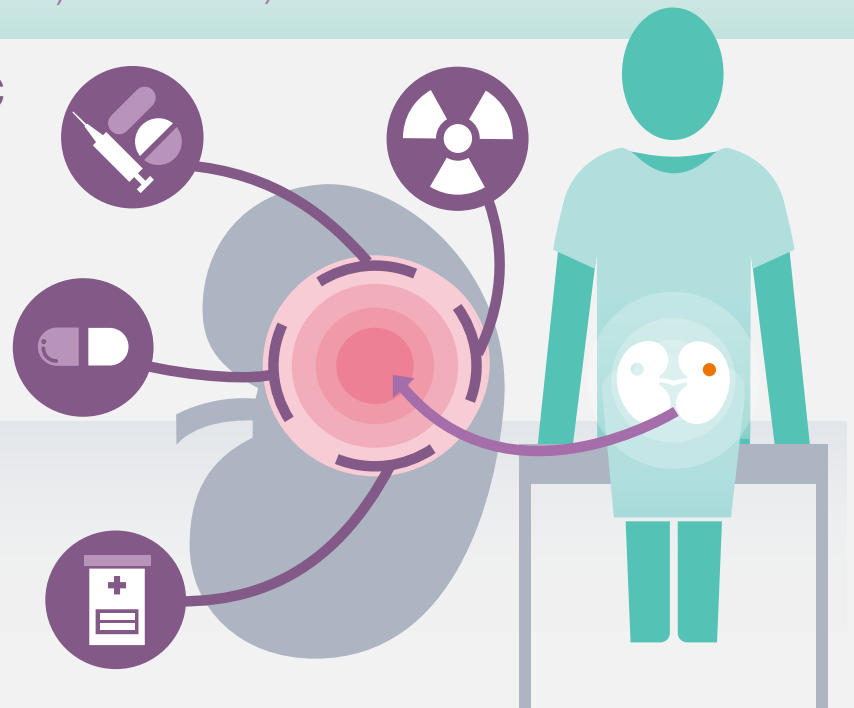
RCC is difficult to detect in its early stages, which can lead to metastatic or advanced disease.



Treatment approaches for advanced RCC include:

- Surgery
- Targeted therapy
- Radiation
- Chemotherapy
- Cytokine therapy
- Immunotherapy

These treatment options may be used at different stages of the disease with the goal of temporarily stopping or slowing the growth of the tumor and/or boosting the body's immune response against cancer cells.



For more information, please speak with your health care provider.

